

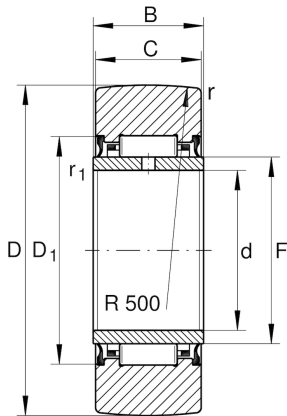
NA22/6-2RSR

Yoke type track roller

Schaeffler ID:
0000275530000

Yoke type track rollers NA22...-2RSR,
without axial guidance, lip seals on both
sides

Technical information



Main Dimensions & Performance Data

D	19 mm	Outside diameter
F	10 mm	Raceway diameter inner ring
C	11.8 mm	Width, outer ring
$C_{r w}$	3,900 N	Basic dynamic load rating, radial
$C_{0 r w}$	3,700 N	Basic static load rating, radial
$C_{u r w}$	495 N	Fatigue load limit, radial
$n_{D G}$	9,000 1/min	Speed on permanent grease lubrication
	19.6 g	Weight

Dimensions

d	6 mm	Bore diameter
B	12 mm	Width, inner ring
$D_{1 \min}$	16 mm	Minimum mounting dimension
r_{\min}	0.3 mm	Minimum chamfer dimension
$r_{1 \min}$	0.3 mm	Minimum chamfer dimension
R	500 mm	Radius of outer ring outside profile